



LANDLORD FURNITURE CO

FURNITURE PACKAGES



Furniture range shown is Keswick range with Beige Matiz Miami bed



CONTENTS

4	About Us	
6	Why Choose Us	
8	Professional HMO Packages	
10	Student HMO Packages	
14	Grey Sonoma Oak	
16	Cashmere Wood Grain	
18	Native Grain Collection	
20	Stirling	
21	Stroud	
22	Padstow	
23	Keswick	
24	The Flows	
25	Concrete & Silk	
26	Concrete & Iron	
27	Charcoal	
28	The Oak Collection	
30	White Craft Oak	
31	Grey Craft Oak	
32	Gold Craft Oak	
33	Platinum Grange Oak	
34	Available Colour Ranges	
36	Individual Products and Dimensions	
38	Beds	
		40 Colour Options
		42 Headboards
44	Sofas	
		46 Colour Options
48	Dining Tables	
50	Montana Furniture	
52	Montana TV Cabinets	
54	Chairs	
56	Extra (Bedding, Towels, Mirrors and Cushions)	
58	A Little Inspiration	
66	What our clients have to say	
68	FAQ's	
69	Contact Us	
70	Individual Price List	
71	The Archive Collection	





ABOUT US



Landlord Furniture Co is owned and managed by Dale Wild, a professional landlord.

Landlord Furniture Co was born in 2016 after Dale had finally had enough of wasting time and money on poor quality flat packed furniture that was not fit for purpose, for his own properties.



Since its inception, Landlord Furniture Co has gone from strength to strength, continuously expanding the furniture ranges to be ahead of upcoming trends, delivering furniture all over the UK to delighted customers, all with the help of our fantastic sales and delivery teams.

WHY CHOOSE LANDLORD FURNITURE CO

Using Landlord Furniture Co can offer many benefits aside from just excellent quality furniture.

Here are a few reasons why our clients love what we do.



Expertise and Experience

Landlord Furniture Co was founded by a Landlord for Landlords. After realising that the existing offer of 'landlord furniture' was simply not fit for purpose, Dale decided to go about making it himself. We know what landlords and tenants need!



Unrivalled Quality and Flexibility

Most of our products are made right here in sunny Greater Manchester, either directly by ourselves, or exclusively for us locally. Meaning our furniture is not available anywhere else!

All our bedroom furniture is made completely from 18mm MFC board meaning no cardboard backs here! This gives maximum rigidity and ensures that your furniture can stand the test of time.



Bespoke Service

Not only do we have limitless colour options (yes... limitless, if you can't find what you are looking for in our brochure, we can work with you to create your very own signature furniture range) all our furniture is made to order, meaning that you can make it perfectly fit any awkward spaces.



Creative Input

Our friendly and creative team have collectively furnished over 8000 rooms in the past year alone. If you are looking for some creative help to create rooms that look great and stand out on the market, we can certainly help.



Stress Reduction

Refurbishing and furnishing a property can be stressful (however big or small). Working with us, allows you to offload the stress and responsibilities of sourcing and installing furniture to us. With just one phone call, you can have beautiful looking, sturdy furniture delivered to your property, and installed by our team of in-house professionals whilst you can put your feet up with a brew (or focus on sourcing the next deal).



Peace of Mind

We stand by our style and quality. Enjoy a 3 year warranty on all of our furniture, to help you invest with confidence.



Book an appointment at our Oldham showroom to see all our latest products and a member of our team will guide you through the ordering process.

Our showroom is open
Monday – Friday, 9am - 4pm.

Can't make it to us?

Scan the QR code below to take a virtual tour of our showroom.



Furniture shown is White Craft Oak with aqua plush bed

LARGE ORDER DISCOUNTS AVAILABLE



PROFESSIONAL HMO PACKAGES

First 5 bedrooms
£756 +VAT per bedroom

Additional bedrooms are charged at a discounted rate of £595 +VAT.

Packages are as indicated; all colour options are included. If you wish to mix and match your rooms or change any furniture sizes, this will no longer qualify as a package.



Each bedroom package includes:



1 x bed with mattress and headboard



1 x double wardrobe (R2)



1 x chest of 3 drawers (CH3)



1 x bedside table (BS1)



We have dozens of colour combinations available. If you would like to create your own colour range, please contact the office on info@landlordfurnitureco.co.uk or **0161 633 2651**

Furniture shown is Grey Sonoma Oak with black T-bar handles, Charcoal Linosso bed

LARGE ORDER
DISCOUNTS
AVAILABLE

STUDENT HMO PACKAGES

First 5 bedrooms
£854 +VAT per bedroom

Additional bedrooms are charged at a discounted rate of £648 +VAT.

Packages are as indicated; all colour options are included. If you wish to mix and match your rooms or change any furniture sizes, this will no longer qualify as a package.



Each bedroom package includes:



1 x bed with
mattress and
headboard



1 x double
wardrobe (R2)



1 x chest of 3
drawers (CH3)



1 x single drawer
desk (D2)



1 x Louvre padded
plastic chair
choice of white,
black or grey



We have dozens of colour combinations available.
If you would like to create your own colour range, please contact
the office on info@landlordfurnitureco.co.uk or **0161 633 2651**



RANGES



GREY SONOMA OAK

Grey Sonoma Oak is our most popular range and it is clear to see why, with neutral earthy tones, it's versatile and timeless. Grey Sonoma Oak beautifully compliments any wall colour.



3 YEARS
Warranty on
Professional
Packages





CASHMERE WOOD GRAIN

A warm neutral that is very on trend at the moment.



3 YEARS
Warranty on
Professional
Packages



NATIVE GRAIN COLLECTION



**FINANCE
AVAILABLE**

New for 2024, the Native Grain collection includes 4 brand new ranges with never seen before colours and combinations.

From cool and minimalist to cosy and cocooning, with these ranges, you will be sure to make a statement.

- Stirling
- Stroud
- Padstow
- Keswick





CASHMERE WOODGRAIN

IRON SURFSIDE ASH



STIRLING

A contemporary fusion of cool cashmere and deep tactile iron surfside ash woodgrains create a warmth to any space.



COFFEE URBAN OAK

DUSK BLUE WOODGRAIN



STROUD

A soothing pastel shade, which infuses a timeless and elegant style. It guarantees a beautiful and chill-out design inspiration, especially when matched with neutral beige hues and light wood decors.



RAW END GRAIN OAK

ALBY BLUE WOODGRAIN



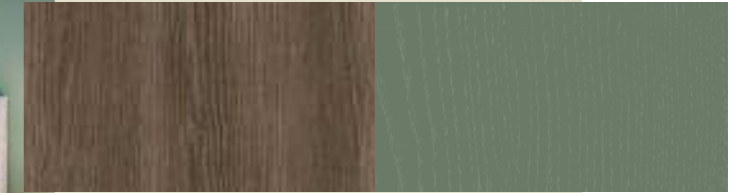
PADSTOW

Think stormy Cornwall seas or heavy leaden storm clouds, this is a dramatic colour combination and very popular with interior designers at the moment. We have combined Alby blue with warm grain oak to create an elegant furniture range.



SMOKED KALA ASH

SMOKE GREEN WOODGRAIN



KESWICK

Rich and traditional, Keswick is perfect for those who want to embrace stronger colours and create spaces that feel calm and serene.



FLOW

The 4 flow colours can be used on their own or mixed and matched to create something a little more bespoke.

- Silk
- Concrete
- Charcoal
- Iron

CONCRETE & SILK



CONCRETE

SILK



CONCRETE & IRON



CONCRETE

IRON



CHARCOAL



CHARCOAL





OAK

- White Craft Oak
- Grey Craft Oak
- Gold Craft Oak
- Platinum Grange Oak

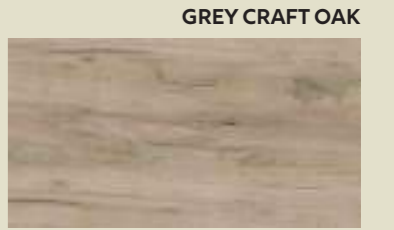




WHITE CRAFT OAK



GREY CRAFT OAK



GOLD CRAFT OAK



PLATINUM GRANGE OAK



GOLD CRAFT OAK



PLATINUM GRANGE OAK



AVAILABLE COLOUR RANGES

All colours can be mixed and matched.

WE ONLY USE 18MM MFC BOARD TO MAKE OUR FURNITURE

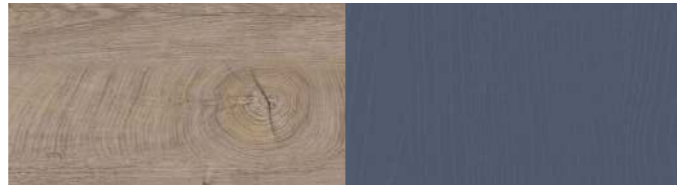
KESWICK



SMOKED KALA ASH

SMOKE GREEN WOODGRAIN

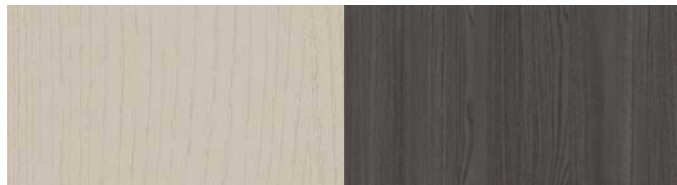
PADSTOW



RAW END GRAIN OAK

ALBY BLUE WOODGRAIN

STIRLING



CASHMERE WOODGRAIN

IRON SURFSIDE ASH

STROUD



COFFEE URBAN OAK

DUSK BLUE WOODGRAIN



CHARCOAL FLOW



CONCRETE FLOW



SILK FLOW



IRON FLOW



WHITE CRAFT OAK



GREY CRAFT OAK



GOLD CRAFT OAK



PLATINUM GRANGE OAK



DARK ROCKFORD HICKORY



LIGHT ROCKFORD HICKORY



NATURAL ROCKFORD HICKORY



GREY SONOMA OAK

SAMPLES

Colour samples are available, speak to a member of our team for information.



INDIVIDUAL PRODUCTS AND DIMENSIONS

Bespoke sizes available.



Bed sizes

Single bed:
900mm (W) x 1900mm (L)

4ft bed:
1220mm (W) x 1900mm (L)

Standard double bed:
1370mm (W) x 1900mm (L)

King size bed:
1500mm (W) x 2000mm (L)



BEDS

FINANCE
AVAILABLE

BED PRICES

3ft bed set – £240 + VAT

4ft bed set – £327 + VAT

4ft6 bed set (double) – £327 + VAT

5ft bed set – £381 + VAT

5ft or 6ft zip and link set – £505 + VAT

Cut out bed bases and solid bed bases are the same price. For attic rooms, or low lying ceilings, we can also offer a low lying bed base that only comes in a solid bed base option.

If you have a loft or basement room, or just tight access, we would recommend upgrading to a split bed base to ensure a seamless delivery.

Split bed prices:

3ft bed – £10 + VAT

4ft bed – £15 + VAT

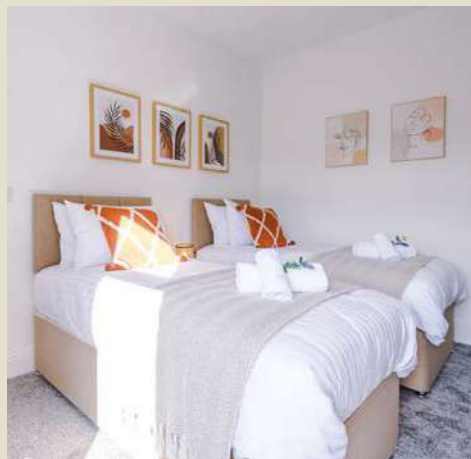
4ft6 bed – £15 + VAT

5ft bed – £20 + VAT

All bed packages come with a reinforced open storage base, mattress and headboard. Our mattress is a 12.5g orthopaedic spring unit, medium to firm feel with a dual stretch knit fabric with a lurex top to help regulate temperature.

Design your bed

- Select a size
- Pick your bed base (solid or cut out)
- Choose a headboard
- Select a material and colour



“ The quality of the product is bang on and looks high end... our tenants love it - especially the beds...we have had so many compliments on them!

Burgess Property



“ Absolutely fantastic service. Cannot fault anything. Friendly, helpful, reliable and superb quality beds. Thank you.

3 YEARS
Warranty

COLOUR OPTIONS

Fabric samples are available, speak to a member of our team for information.



BEIGE LINOSSO



BEIGE MATIZ



GREEN CONISTON



MIDNIGHT LINOSSO



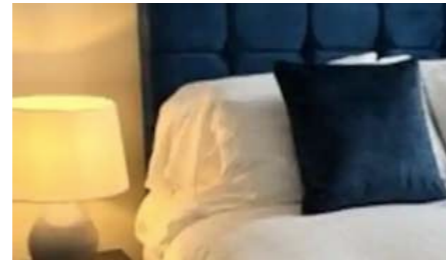
MINK PLUSH



BLACK LINOSSO



BLACK PLUSH



BLUE CONISTON



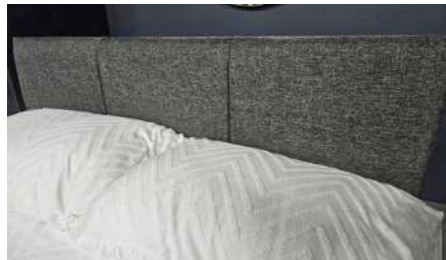
OXBLOOD CONISTON



CONISTON MINK



SLATE LINOSSO



CHARCOAL MATIZ



CHARCOAL LINOSSO



CONISTON ALMOND



SILVER MATIZ



SILVER PLUSH



STEEL PLUSH



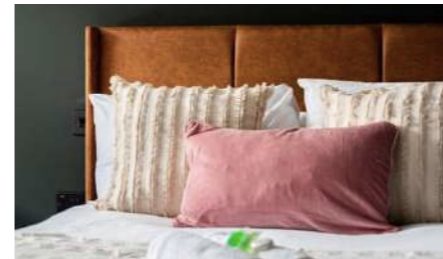
CONISTON ARMOUR



CONISTON CHARCOAL



DUCK EGG LINOSSO



TAN ARIZONA



TEAL AQUA



TUMERIC CONISTON

HEADBOARDS

All our bed sets come with a 3 panel headboard (Ruby) as standard. The headboard sits at 115cm high.

Upgrade to a Miami, Cubed, Florence or winged headboard for £42 + VAT

Floor standing headboards offer more stability and a more luxurious finish sitting at 125cm high. All our headboard styles can be made into floor standing versions for an additional £80 + VAT.

Please check access to upstairs, attic and basement rooms as floor standing headboards are provided in one solid piece.

Winged headboards are unavailable on zip and link bed sets.



RUBY



CUBED



FLORENCE



MIAMI



WINGED MIAMI

BESPOKE SOFAS

All of our sofas are made in house, so if a standard model won't fit, we can make it to your exact measurements. Are you struggling to find a solution to fit in an attic room or basement? We can make sofas into small, modular sections so they'll fit down narrow stairs or hallways. Please note, all bespoke sofas are non-returnable and non-refundable.

SOFA BEDS

2 seater – £622 + VAT

3 seater – £665 + VAT

Corner 8ft x 6ft – £930 + VAT

Corner sofa 8ft x 6ft – £985 + VAT

CORNER SOFAS

Corner sofa 8ft x 6ft – £730 + VAT

Corner sofa 8ft x 8ft – £785 + VAT

Bespoke sizes available on request

NARROW ARM & ARC ARM SOFAS

3 seater sofa 183cm x 88cm – £465 + VAT

2 seater 159cm x 88cm – £422 + VAT

Armchair 99cm x 88cm – £240 + VAT

3 YEARS
Warranty

Bespoke corner sofas are able to be made into a sofa bed for an additional £200 + VAT.



8X8FT CORNER SOFA



8X6FT CORNER SOFA



ARC ARM 3 SEATER SOFA



NARROW ARM 2 SEATER SOFA



NARROW ARM 3 SEATER SOFA

Design your sofa

- Select a size
- Choose a style
- Select a material and colour
- Pick your style of leg



COLOUR OPTIONS

Fabric samples are available, speak to a member of our team for information.



BISCUIT VELVET



MONACO BOYSENBERRY



MONACO GREY



MONACO HEATHER



BLACK VELVET



CHARCOAL LINOSSO



CHELSEA GREY



MONACO ROYALE



OLIVE BOUTIQUE



PACIFIC BOUTIQUE



CHOCOLATE ARIZONA



CONISTON OXBLOOD



EMERALD VELVET



MONACO PUMPKIN



TAN ARIZONA



TEAL VELVET



SILVER MATIZ



MALTA GOLD



MANHATTAN SILVER



VENICE DOVE



VENICE FOREST



VENICE SAPPHIRE

DINING TABLES



PRICE LIST

Ibiza - £175 + VAT

Silvio - £145 + VAT

Capri - £270 + VAT

Stone Grey - £252 + VAT

Copenhagen table - £208 + VAT

Copenhagen matching bench - £94 + VAT



CAPRI



IBIZA



STONE GREY



SILVIO



COPENHAGEN



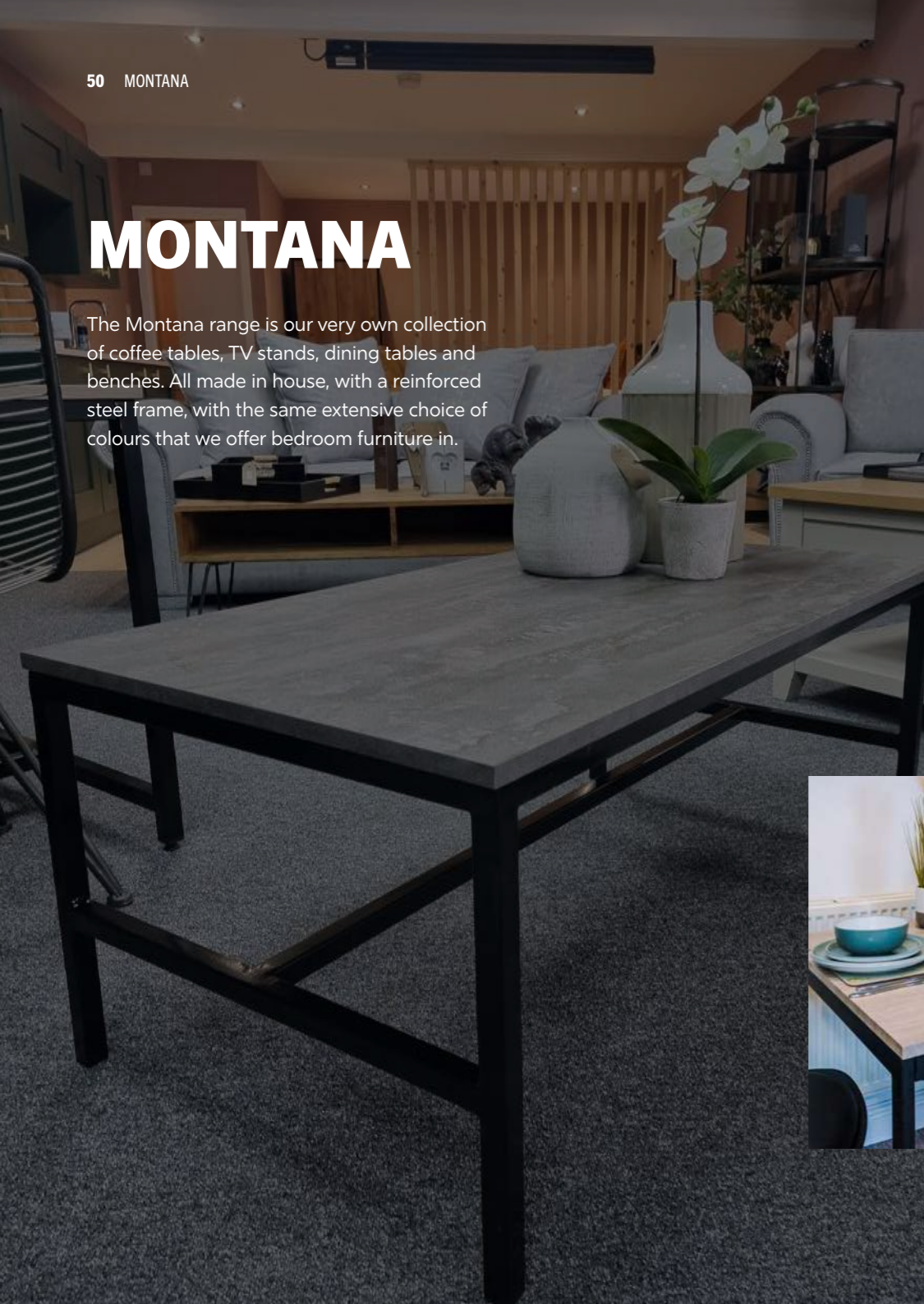
STONE GREY



CAPRI

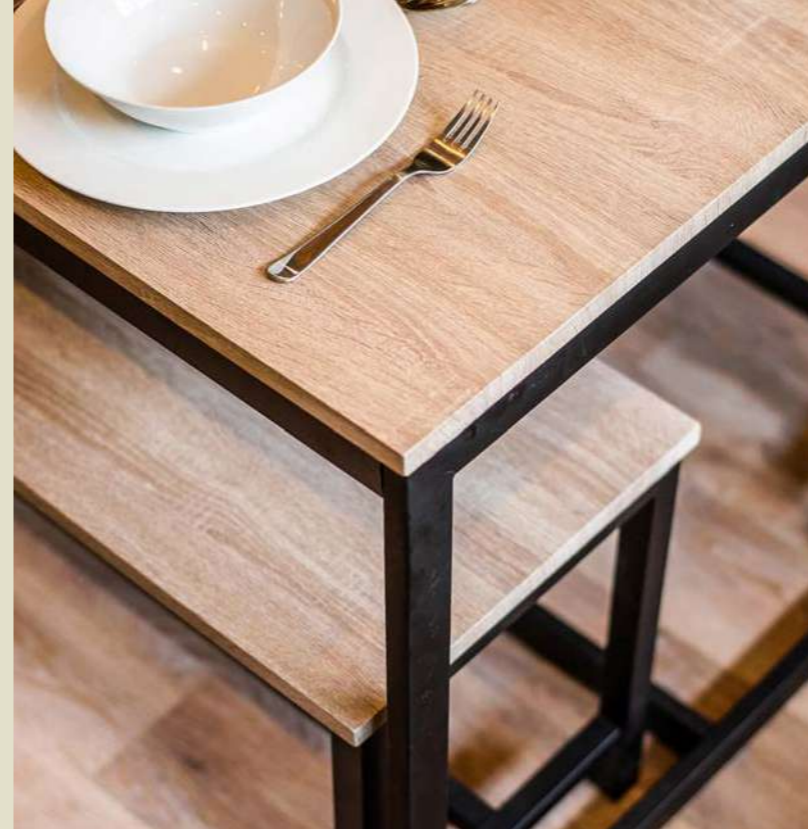
MONTANA

The Montana range is our very own collection of coffee tables, TV stands, dining tables and benches. All made in house, with a reinforced steel frame, with the same extensive choice of colours that we offer bedroom furniture in.



PRICE LIST

- 4ft Dining table - £234 + VAT
- 4ft Bench seat - £192 + VAT
- 6ft Dining table - £255 + VAT
- 6ft Bench seat - £199 + VAT
- 8ft Dining table - £276 + VAT
- 8ft Bench seat - £215 + VAT
- Coffee table - £190 + VAT
- TV Cabinet - £215 + VAT



MONTANA TV CABINETS



COLONIAL GRANGE OAK

GREY SONOMA OAK



WHITE CRAFT OAK



DARK ARTWOOD

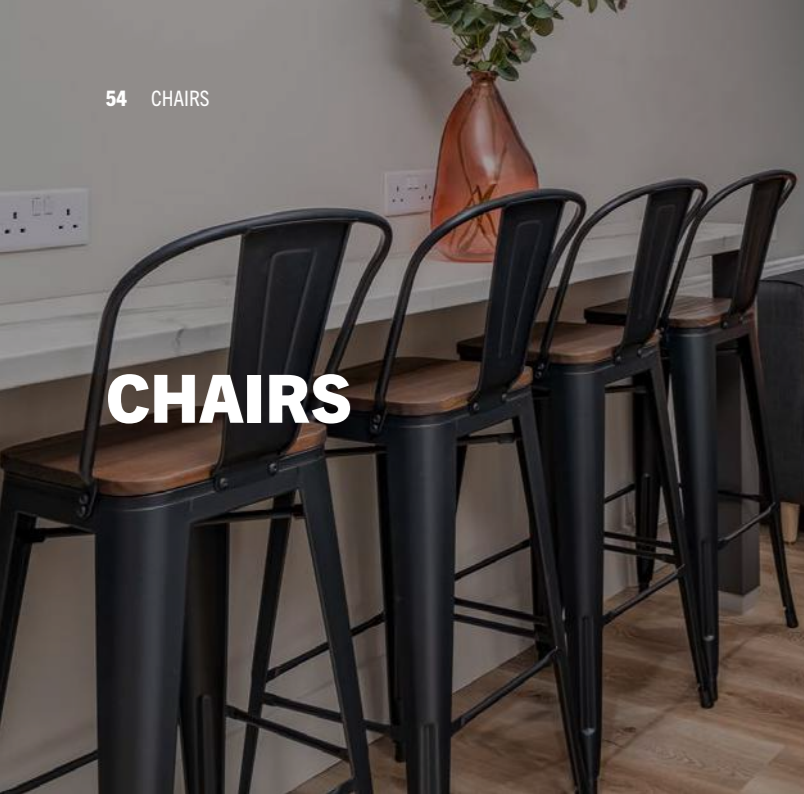


PLATINUM GRANGE OAK



CONCRETE AND IRON FLOW





CHAIRS



**GRAFTON
DINING CHAIR**
£57 + VAT



**GRAFTON
STOOL**
£69 + VAT



**COOPER GREY AND TAN
FAUX LEATHER CHAIR**
£98 + VAT



WISHBONE CHAIR
£134 + VAT



**LOUVRE CHAIRS,
GREY BLACK AND WHITE**
£57 + VAT



**BASIL GREEN VELVET
ACCENT CHAIR**
£200 + VAT



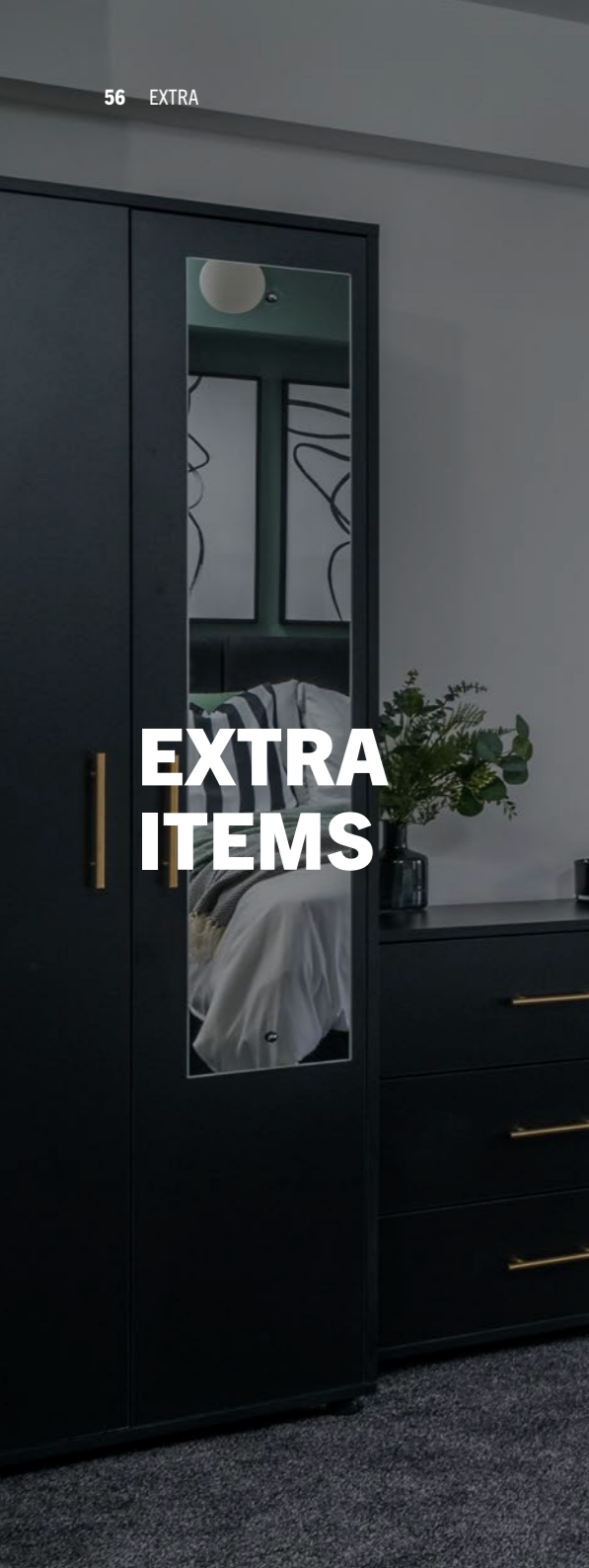
**CHARLES GREEN VELVET
ACCENT CHAIR**
£200 + VAT



**4359 WIRE
GUNMETAL CHAIR**
£57 + VAT



**CREAM BOUCLE
ACCENT CHAIR**
£200 + VAT



EXTRA ITEMS



**GREY DISTRESSED
STONE LAMP**
£35 + VAT



**LONG MIRROR
WITH GOLD FRAME**
100cm x 40cm £65 + VAT



**ROUND MIRROR
WITH BLACK FRAME**
50cm £40 + VAT
80cm £55 + VAT



**ROUND MIRROR
WITH GOLD FRAME**
50cm £40 + VAT



DECORATIVE FAUX PLANTS
STARTING FROM £18 + VAT



BEDDING AND TOWELS
PRICE ON REQUEST



DID7962 ARCH MIRROR
90cm x 61cm
£59 + VAT



DID7963 ARCH MIRROR
120cm x 60cm
£73.50 + VAT



DID7966 LONG STRAIGHT MIRROR
180cm x 60cm
£83.50 + VAT



DID7967 3 PANEL BLACK MIRROR
120cm x 75cm
£73.50 + VAT



WARDROBE MIRRORS*
£44 + VAT

*Please note wardrobe mirrors can only be fitted to the outside of the wardrobe available in two different sizes for standard wardrobes and combinations.

LOOKING FOR SOME INSPIRATION?

We have curated a selection of moodboards using our furniture colours matching to popular wall colours.

Whether you have a colour scheme in mind, it's your first HMO and you need some assistance or you are having complete decision fatigue...we can help you create a beautiful and unique space.



GREY SONOMA OAK



DARK ARTWOOD

CORNFORTH WHITE



ROCKFORD LIGHT HICKORY AND WHITE



VENICE SAPPHIRE





DUSK BLUE



ASK OUR TEAM FOR HELP TO BRING YOUR IDEA TO LIFE

DE NIMES

HARTFORD MINK



CONCRETE AND SILK FLOW



MONACO PUMPKIN

DOWN PIPE



GREY SONOMA OAK WITH DUSK BLUE FASCIA



GREY SONOMA OAK



LIGHT ARTWOOD



GREY SONOMA OAK



WHITE CRAFT OAK



CONCRETE AND CHARCOAL FLOW

JEFFERSON HESSIAN



PLATINUM GRANGE OAK



CONISTON TURMERIC



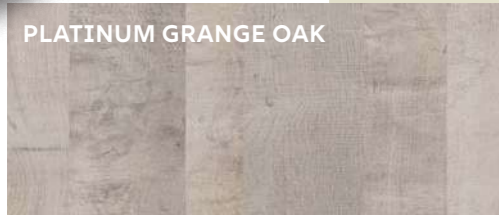
GREEN SMOKE

ELEPHANT BREATH

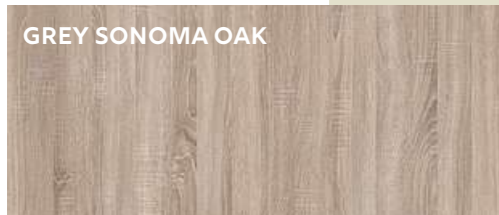
CASHMERE

GREEN SMOKE

PLATINUM GRANGE OAK



GREY SONOMA OAK



GREY SONOMA OAK



GREY SONOMA OAK



GREY SONOMA OAK



DARK ARTWOOD



WHITE CRAFT OAK



SILVER MATIZ



GREY SONOMA OAK



KESWICK



NATIVE PINK

STIFFKEY BLUE

PLATINUM GRANGE OAK

NATIVE PINK

SULKING ROOM PINK



PACIFIC BOUTIQUE



WHITE CRAFT OAK



MONACO HEATHER



GOLD CRAFT OAK

WHAT OUR CLIENTS HAVE TO SAY



"A fantastic range that's well designed, great quality and great value; created by a team who really understand this market. Jemma helped us from start to finish and was attentive, patient and thorough, helping our complex order glide through effortlessly."

Kathryn Merrington
Eureka Spaces

"Top quality furniture yet again; looks great and rock solid in terms of build and materials."

Damon Ormonde
DH Ormonde Ltd



"After searching around for some time coming across Landlord Furniture Co solved the complications furnishing a property presents. Heidi part of the sales team being an expert on the furniture range helped enormously choosing furniture for the HMO I am setting up. Welcoming, with the focus on solving problems made buying from the team efficient and uncomplicated. Delivery was swift with excellent communication as to times and dates. The team Jay and Rob were task focused and experts with the furniture range. Professional, friendly and courteous at all times representing the company in absolutely the best possible way. Should I set up a second rental property I will have no hesitation employing the services of Landlord Furniture Co again. It is clear that values the company is founded upon is not just represented but put into practice at every point of contact."

Francis Barber
FSB Homes

"The service from start to finish has been excellent. Heidi was extremely helpful and responded very quickly to both emails and calls. The speed at which the team were able to make and deliver custom furniture is very impressive and I am very impressed with the quality. I will definitely be using Landlord Furniture Co again!"

Lizzie Bennet
Cosy Homes Property Management

"I used the Landlord Furniture Co for the first time to furnish a 5 Bed HMO. Heidi was very helpful and provided a great service in store with the design changes I needed to suit the property. The Delivery was quick and the lads who installed were great, all furniture was installed in every room without myself having to deal with any issues or build."

Ben Frost
DPI Property Group Ltd

FAQ'S

How do I order?

Give us a call or drop us an email. Our website is not e-commerce because we offer such a bespoke service. Our sales team will be able to assist with any questions you may have as well as offering you advice on our product ranges.

Now I have ordered how can I pay?

We accept payment via BACS, and we accept all major credit cards, excluding AMEX. We also work with several finance lenders, feel free to ask for more details. We require a 10% deposit the day the order has been confirmed, and the full balance is required 48 hours before delivery, failure to make payment may result in the order being placed on hold.

Do you have a showroom?

Our showroom is located near Oldham and is available to visit or use for your client meetings.

My property is not quite ready, what do I do?

If a refurb is delayed, please let us know within 5 working days so we can reschedule. If the order is delayed less than 5 working days than the original delivery date or our teams get to site and cannot install the furniture you will have to pay a redelivery charge. If your property is almost complete, we can deliver if the paint on the walls is dry, and the carpets are installed.

Access

If you cannot get to site on the day of delivery, clients can leave a key in a lock box and inform the office of the code, who will pass this onto the delivery team. The team will lock up and put the key back when leaving. We can take images of the installation at your request if needed. Please let the sales team know, and they can arrange this for you.

Bespoke items

Any bespoke items are unreturnable. If you wish to return any items from your order this will incur a 35% restocking fee and a collection charge if applicable.

Does the furniture come with a warranty?

Yes our furniture comes with either a 3-year warranty or 1-year warranty on smaller items. Please email the team for a full copy of our warranty policy.

Is installation included?

Yes, installation is included in the price. If you do not wish for the items to be installed we can do so at your own discretion.

Does LFC remove old furniture?

Yes we can dispose of your existing furniture, simply get in touch for more details.

POP IN AND SEE US!

Our showroom is open
Monday – Friday 9am – 4pm

We kindly ask that you call ahead to make an appointment to ensure that there is a member of the sales team available to help.

**We look forward to seeing you soon.
Dale, Lisa and all the team, Luna too!**

Opening hours

Monday – Friday
9am – 4pm

Showroom

Unit 2, Coin Street,
Oldham,
OL2 6EE





Call

0161 633 2651

Email

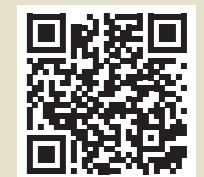
info@landlordfurnitureco.co.uk

 landlordfurnitureco

 landlordfurnitureco

Find us here

Scan the QR code below to find us on Google Maps.



PRICE LIST

Code	Description	Price
R1	Single wardrobe	£162.00
R1/1	Single wardrobe with 1 drawer	£200.00
R1/2	Single wardrobe with 2 drawers	£239.00
R1/3	Single wardrobe with 3 drawers	£277.00
R2	Double wardrobe	£190.00
R2/1	Double wardrobe with 1 drawer	£235.00
R2/2	Double wardrobe with 2 drawers	£275.00
R2/3	Double wardrobe with 3 drawers	£305.00
RO/2	Open cask wardrobe with 2 drawers	£275.00
D4	Desk with no storage	£117.00
D2	Desk with 1 drawer	£195.00
D3	Desk with 3 drawers	£270.00
CH3	Chest of 3 drawers	£177.00
CH4	Chest of 4 drawers	£215.00
CH5	Chest of 5 drawers	£259.00
BS	Bedside table no drawer	£70.00
BS1	Bedside table with 1 drawer	£105.00
BS2	Bedside table with 2 drawers	£140.00

All prices are excluding VAT

THE ARCHIVE COLLECTION

Discover old friends and hidden gems in the archives. Whilst trends change, our quality doesn't.

Every furniture range that has retired from our core offering has found its way here. Whether you're looking for an old favourite or just want something a little different, explore our archive colours below.



NATIVE PINK

COLONIAL GRANGE OAK

LIGHT CONCRETE

DARK ARTWOOD

DARK CONCRETE

LANCASTER OAK

LIGHT ARTWOOD

LIGHT GREY

MATTE WHITE



LANDLORD FURNITURE CO

Opening hours

Monday – Friday
9am – 4pm

Showroom

Unit 2, Coin Street,
Oldham,
OL2 6EE

Call

0161 633 2651

Email

info@landlordfurnitureco.co.uk



[landlordfurnitureco](https://www.facebook.com/landlordfurnitureco)



[landlordfurnitureco](https://www.instagram.com/landlordfurnitureco)

Find us here

Scan the QR code below to
find us on Google Maps.

