

FURNITURE PACKAGES



LANDLORD FURNITURE CO

Furniture range shown is Cashmere with Beige Matiz bed



CONTENTS

- 4 About Us**
- 6 Why Choose Us**
- 8 Professional HMO Packages**
- 10 Student HMO Packages**
- 14 Grey Sonoma Oak**
- 16 Cashmere Wood Grain**
- 18 Native Grain Collection**
 - 18 Padstow
 - 19 Keswick
- 20 The Flows**
 - 21 Concrete & Silk
 - 22 Concrete & Iron
 - 23 Charcoal
- 25 The Oak Collection**
 - 26 White Craft Oak
 - 27 Grey Craft Oak
 - 28 Gold Craft Oak
 - 29 Platinum Grange Oak
 - 30 Coast Evoke Oak
 - 31 Raw End Grain
 - 32 Cannolo Cremona Oak
 - 33 Cotta Cremona Oak
 - 34 Carbon Marine Wood
- 36 Individual Products and Dimensions**
- 38 Individual Price List**



- 40 Beds**
 - 44 Colour Options
 - 46 Headboards
- 48 Sofas**
 - 50 Colour Options
- 52 Dining Tables**
- 54 Coffee Tables**
- 56 Montana Furniture**
- 58 Montana TV Cabinets**
- 60 Chairs**
- 62 Accent Chairs**
- 64 Extra items (Bedding, Towels, Mirrors and Cushions)**
- 65 Wild Interiors**
- 66 A Little Inspiration**
- 72 What our clients say about us**
- 74 FAQ's**
- 76 Swatches**
- 78 Contact us**



ABOUT US



Landlord Furniture Co is owned and managed by Dale Wild, a professional landlord.

Landlord Furniture Co was born in 2016 after Dale had finally had enough of wasting time and money on poor quality flat packed furniture that was not fit for purpose, for his own properties.

Since its inception, Landlord Furniture Co has gone from strength to strength, continuously expanding the furniture ranges to be ahead of upcoming trends, delivering furniture all over the UK to delighted customers, all with the help of our fantastic sales and delivery teams.



WHY CHOOSE LANDLORD FURNITURE CO

Using Landlord Furniture Co can offer many benefits aside from just excellent quality furniture.

Here are a few reasons why our clients love what we do.



Expertise and Experience

Landlord Furniture Co was founded by a Landlord for Landlords. After realising that the existing offer of 'landlord furniture' was simply not fit for purpose, Dale decided to go about making it himself. We know what landlords and tenants need!



Unrivalled Quality and Flexibility

Most of our products are made right here in sunny Greater Manchester, either directly by ourselves, or exclusively for us locally. Meaning our furniture is not available anywhere else!

All our bedroom furniture is made completely from 18mm MFC board meaning no cardboard backs here! This gives maximum rigidity and ensures that your furniture can stand the test of time.



Bespoke Service

Not only do we have limitless colour options (yes... limitless, if you can't find what you are looking for in our brochure, we can work with you to create your very own signature furniture range) all our furniture is made to order, meaning that you can make it perfectly fit any awkward spaces.



Creative Input

Our friendly and creative team have collectively furnished over 8000 rooms in the past year alone. If you are looking for some creative help to create rooms that look great and stand out on the market, we can certainly help.



Stress Reduction

Refurbishing and furnishing a property can be stressful (however big or small). Working with us, allows you to offload the stress and responsibilities of sourcing and installing furniture to us. With just one phone call, you can have beautiful looking, sturdy furniture delivered to your property, and installed by our team of in-house professionals whilst you can put your feet up with a brew (or focus on sourcing the next deal).



Peace of Mind

We stand by our style and quality. Enjoy a 3 year warranty on all of our furniture, to help you invest with confidence.



Book an appointment at our Oldham showroom to see all our latest products and a member of our team will guide you through the ordering process.

Our showroom is open:
Monday – Thursday 8:30am - 4:30pm
Friday 8:30am - 3:30pm
Weekends by appointment only.

Can't make it to us?

Scan the QR code below to take a virtual tour of our showroom.



Furniture shown is White Craft Oak with aqua plush bed

LARGE ORDER DISCOUNTS AVAILABLE



PROFESSIONAL HMO PACKAGES

£793 + VAT per bedroom

Additional bedrooms are charged at a discounted rate of £642 + VAT.

Packages are as indicated; all colour options are included. If you wish to mix and match your rooms or change any furniture sizes, this will no longer qualify as a package.



Each bedroom package includes:



1 x bed with mattress and headboard



1 x double wardrobe (R2)



1 x chest of 3 drawers (CH3)



1 x bedside table (BS1)



We have dozens of colour combinations available. If you would like to create your own colour range, please contact the office on info@landlordfurnitureco.co.uk or **0161 633 2651**

Furniture shown is Grey Sonoma Oak with black T-bar handles, Charcoal Linosso bed

LARGE ORDER DISCOUNTS AVAILABLE



STUDENT HMO PACKAGES

New reduced price:
£833 + VAT per bedroom

Additional bedrooms are charged at a discounted rate of £638 + VAT.

Packages are as indicated; all colour options are included. If you wish to mix and match your rooms or change any furniture sizes, this will no longer qualify as a package.



Each bedroom package includes:



1 x bed with mattress and headboard



1 x double wardrobe (R2)



1 x chest of 3 drawers (CH3)



1 x no storage desk (D4)



1 x Louvre padded plastic chair choice of white, black or grey



We have dozens of colour combinations available. If you would like to create your own colour range, please contact the office on info@landlordfurnitureco.co.uk or **0161 633 2651**



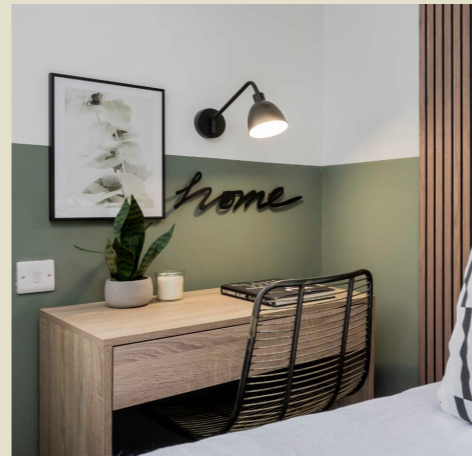
RANGES



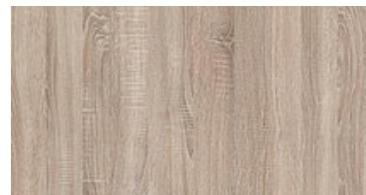
**BEST
SELLER**

GREY SONOMA OAK

Grey Sonoma Oak is our most popular range and it is clear to see why, with neutral earthy tones, it's versatile and timeless. Grey Sonoma Oak beautifully compliments any wall colour.



3 YEARS
Warranty on
Professional
Packages





CASHMERE WOOD GRAIN

A warm neutral that is very on trend at the moment.

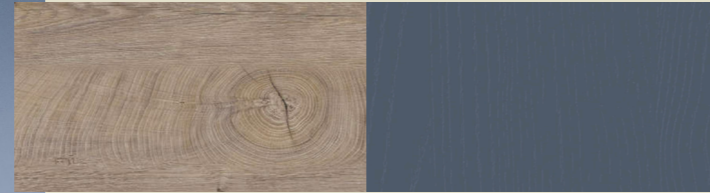


3 YEARS
Warranty on
Professional
Packages



RAW END GRAIN OAK

ALBY BLUE WOODGRAIN



PADSTOW

Think stormy Cornwall seas or heavy leaden storm clouds, this is a dramatic colour combination and very popular with interior designers at the moment. We have combined Alby blue with warm grain oak to create an elegant furniture range.



SMOKED KALA ASH

SMOKE GREEN WOODGRAIN



KESWICK

Rich and traditional, Keswick is perfect for those who want to embrace stronger colours and create spaces that feel calm and serene.



FLOW

The 4 flow colours can be used on their own or mixed and matched to create something a little more bespoke.

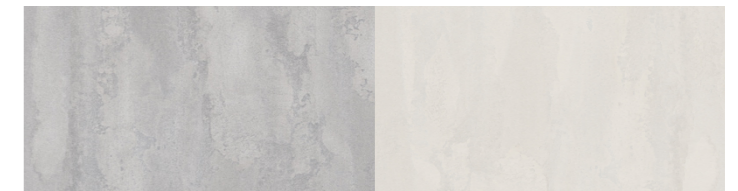
- Silk
- Concrete
- Charcoal
- Iron

CONCRETE & SILK



CONCRETE

SILK



CONCRETE & IRON

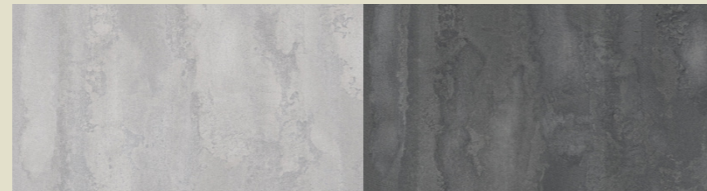


CHARCOAL



CONCRETE

IRON



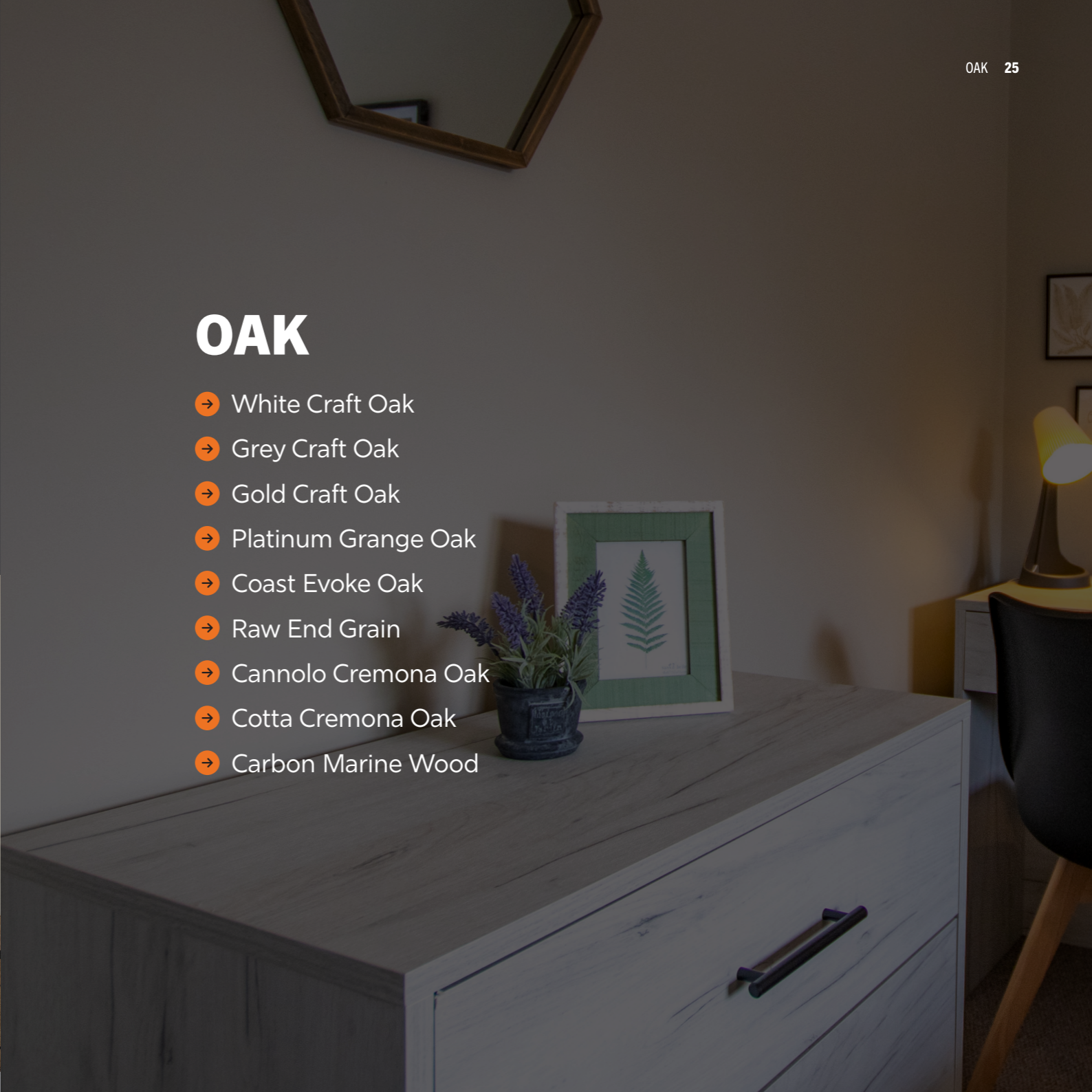
CHARCOAL





OAK

- White Craft Oak
- Grey Craft Oak
- Gold Craft Oak
- Platinum Grange Oak
- Coast Evoke Oak
- Raw End Grain
- Cannolo Cremona Oak
- Cotta Cremona Oak
- Carbon Marine Wood





WHITE CRAFT OAK



GREY CRAFT OAK



GOLD CRAFT OAK



GOLD CRAFT OAK



PLATINUM GRANGE OAK



PLATINUM GRANGE OAK



COAST EVOKE OAK

NEW
COLOUR

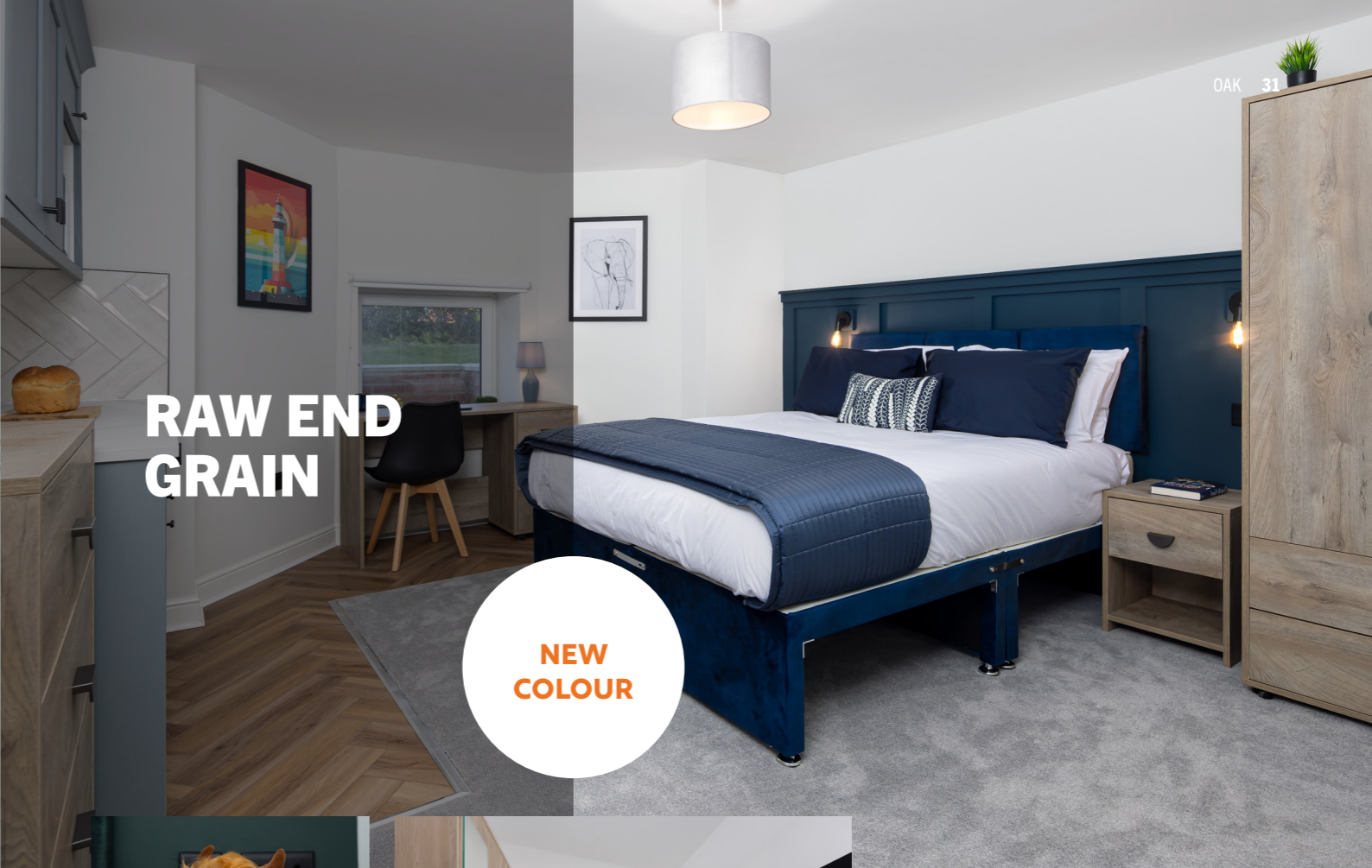


COAST EVOKE OAK



RAW END GRAIN

NEW
COLOUR



RAW END GRAIN



CANOLO CREMONA OAK

NEW
COLOUR



CANOLO CREMONA OAK



COTTA CREMONA OAK

NEW
COLOUR



COTTA CREMONA OAK



FEATURED FINISH

CARBON MARINE WOOD

NEW COLOUR



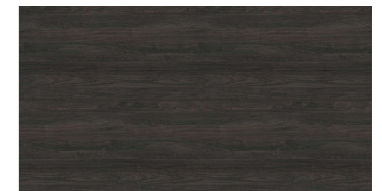
“ Carbon Marine Wood is a deep and appealing wood decor with a fine woodgrain. Despite its predominant dark colours, it has a naturalness to it due to its texture being slightly irregular, rather than straight lines.

It pairs well with soft neutrals and muted tones that help balance its depth, or for a more contemporary feel, combine it with matte blacks, brushed metals, and deep accent shades like forest green or navy.”

LISA WILD, LANDLORD FURNITURE CO



CARBON MARINE WOOD





INDIVIDUAL PRODUCTS & DIMENSIONS

Bespoke sizes available.



Bed sizes

Single bed:
900mm (W) x 1900mm (L)

4ft bed:
1220mm (W) x 1900mm (L)

Standard double bed:
1370mm (W) x 1900mm (L)

King size bed:
1500mm (W) x 2000mm (L)



PRICE LIST

Code	Description	Price
R1	Single wardrobe	£170
R1/1	Single wardrobe with 1 drawer	£210
R1/2	Single wardrobe with 2 drawers	£250
R1/3	Single wardrobe with 3 drawers	£290
R2	Double wardrobe	£199
R2/1	Double wardrobe with 1 drawer	£246
R2/2	Double wardrobe with 2 drawers	£288
R2/3	Double wardrobe with 3 drawers	£320
RO/2	Open cask wardrobe with 2 drawers	£288
D4	Desk with no storage (REDUCED)	£117 £83
D2	Desk with 1 drawer (REDUCED)	£195 £126
D3	Desk with 3 drawers	£270
CH3	Chest of 3 drawers	£185
CH4	Chest of 4 drawers	£225
CH5	Chest of 5 drawers	£271
BS	Bedside table no drawer (REDUCED)	£70 £65
BS1	Bedside table with 1 drawer (SAME PRICE)	£105
BS2	Bedside table with 2 drawers (SAME PRICE)	£140

All prices are excluding VAT

THE ARCHIVE COLLECTION

Discover old friends and hidden gems in the archives. Whilst trends change, our quality doesn't.

Every furniture range that has retired from our core offering has found its way here. Whether you're looking for an old favourite or just want something a little different, explore our archive colours below.



NATIVE PINK

COLONIAL GRANGE OAK

LIGHT CONCRETE

DARK ARTWOOD

DARK CONCRETE

LANCASTER OAK

LIGHT ARTWOOD

LIGHT GREY

MATTE WHITE

BEDS

FINANCE
AVAILABLE

BED PRICES

3ft bed set – £252 + VAT

4ft bed set – £343 + VAT

4ft6 bed set (double) – £343 + VAT

5ft bed set – £400 + VAT

5ft or 6ft zip and link set – £530 + VAT

For attic rooms, or low lying ceilings, we can also offer a low lying bed base that only comes in a solid bed base option. Solid bed bases are subject to the below split bed charge to assist with access.

If you have a loft or basement room, or just tight access, we would recommend upgrading to a split bed base to ensure a seamless delivery.

Split bed prices:

3ft bed – £12 + VAT

4ft bed – £17 + VAT

4ft6 bed – £17 + VAT

5ft bed – £22 + VAT

All bed packages come with a reinforced open storage base, mattress and headboard. Our mattress is a 12.5g orthopaedic spring unit, medium to firm feel with a dual stretch knit fabric with a luxex top to help regulate temperature.

Mattress prices:

Budget Pinemaster mattress from £71.50 + VAT

Orthopedic Supertuft mattress from £120 + VAT **(BEST SELLER)**

Luxurious 2000 Pocket sprung Buckingham mattress – £350 + VAT

Design your bed

- Select a size
- Pick your bed base (solid or cut out)
- Choose a headboard
- Select a material and colour



★ Trustpilot

“ The quality of the product is bang on and looks high end... our tenants love it - especially the beds...we have had so many compliments on them!

Burgess Property

“ Absolutely fantastic service. Cannot fault anything. Friendly, helpful, reliable and superb quality beds. Thank you. ”

3 YEARS
Warranty

METAL, OTTOMAN & WEIGHTED FLAP STORAGE BEDS

**FINANCE
AVAILABLE**



BED PRICES

Eaton Black metal bed with mesh base – with 1-year warranty

3ft bed set – £160 + VAT

4ft bed set – £185 + VAT

4ft6 bed set (double) – £220 + VAT

Add the budget-friendly Pine-master mattress from £71.50 + VAT (1-year warranty) or the best-selling Orthopaedic mattress from £120 + VAT (3-year warranty).

Ottoman base (all bases include 3-panel Ruby headboard) with 1-year mechanism warranty

3ft bed base – £288 + VAT

4ft bed base – £414 + VAT

4ft6 bed base (double) – £414 + VAT

5ft base – £450 + VAT

6ft base – £594 + VAT

Our Ottoman beds offer a smart and stylish storage solution and feature an easy-lift mechanism for effortless access and practicality. Add our best-selling Orthopaedic mattress from £120 + VAT (3-year warranty).

Weighted flaps
Available to open storage beds for an additional £55 + VAT.



COLOUR OPTIONS

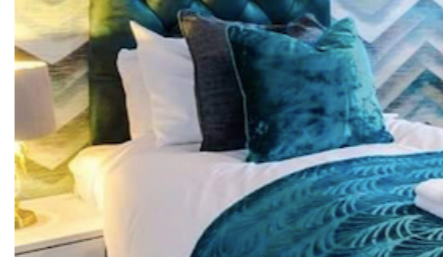
Fabric samples are available, speak to a member of our team for information.



BEIGE LINOSSO



BEIGE MATIZ



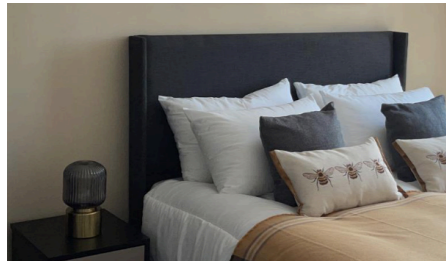
GREEN CONISTON



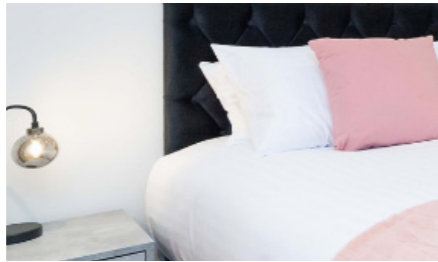
MIDNIGHT LINOSSO



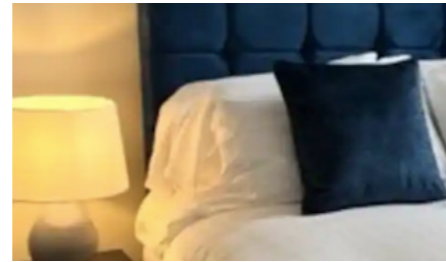
MINK PLUSH



BLACK LINOSSO



BLACK PLUSH



BLUE CONISTON



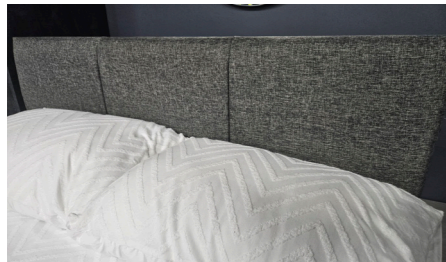
OXBLOOD CONISTON



CONISTON MINK



SLATE LINOSSO



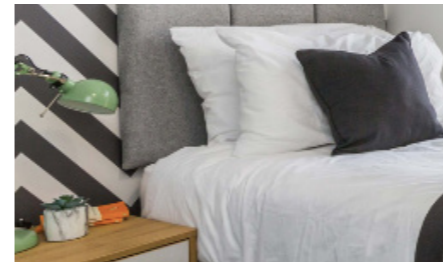
CHARCOAL MATIZ



CHARCOAL LINOSSO



CONISTON ALMOND



SILVER MATIZ



SILVER PLUSH



STEEL PLUSH



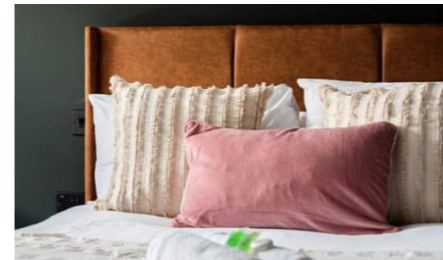
CONISTON ARMOUR



CONISTON CHARCOAL



DUCK EGG LINOSSO



TAN ARIZONA



TEAL AQUA



TUMERIC CONISTON

HEADBOARDS

All our bed sets come with a 3 panel headboard (Ruby) as standard. The headboard sits at 115cm high.

Upgrade to a Miami, Cubed, Florence or winged headboard for £45 + VAT

Floor standing headboards offer more stability and a more luxurious finish sitting at 125cm high. All our headboard styles can be made into floor standing versions for an additional £84 + VAT.

Please check access to upstairs, attic and basement rooms as floor standing headboards are provided in one solid piece.

Winged headboards are unavailable on zip and link bed sets.



RUBY



CUBED



FLORENCE



MIAMI



WINGED MIAMI

BESPOKE SOFAS

All of our sofas are made in house, so if a standard model won't fit, we can make it to your exact measurements. Are you struggling to find a solution to fit in an attic room or basement? We can make sofas into small, modular sections so they'll fit down narrow stairs or hallways. Please note, all bespoke sofas are non-returnable and non-refundable.

SOFA BEDS

2 seater – £653 + VAT

3 seater – £687 + VAT

Corner 8ft x 6ft – £976 + VAT

Corner 8ft x 8ft – £1030 + VAT

CORNER SOFAS

Corner sofa 8ft x 6ft – £766 + VAT

Corner sofa 8ft x 8ft – £825 + VAT

Bespoke sizes available on request

NARROW ARM & ARC ARM SOFAS

3 seater sofa 183cm x 88cm – £488 + VAT

2 seater 159cm x 88cm – £443 + VAT

Armchair 99cm x 88cm – £252 + VAT

3 YEARS
Warranty

Bespoke corner sofas are able to be made into a sofa bed for an additional £200 + VAT.



8X8FT CORNER SOFA



8X6FT CORNER SOFA



ARC ARM 3 SEATER SOFA



NARROW ARM 2 SEATER SOFA



NARROW ARM 3 SEATER SOFA

Design your sofa

- Select a size
- Choose a style
- Select a material and colour
- Pick your style of leg

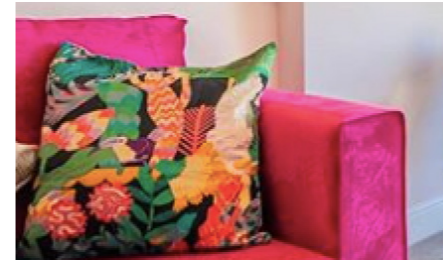


COLOUR OPTIONS

Fabric samples are available, speak to a member of our team for information.



BISCUIT VELVET



MONACO BOYSENBERRY



MONACO GREY



MONACO HEATHER



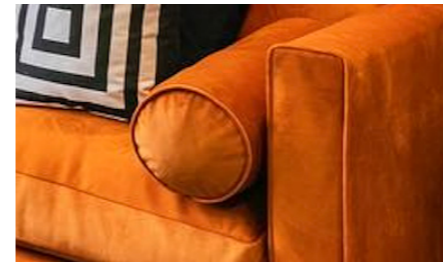
BLACK VELVET



CHARCOAL LINOSSO



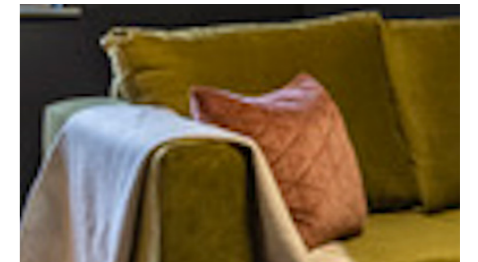
TAN ARIZONA



MONACO PUMPKIN



MONACO ROYALE



OLIVE BOUTIQUE



CHOCOLATE ARIZONA



CONISTON OXBLOOD



EMERALD VELVET



TEAL VELVET



VENICE DOVE



VENICE FOREST



SILVER MATIZ



PACIFIC BOUTIQUE



MANHATTAN SILVER



VENICE SAPPHIRE

DINING TABLES



IBIZA



SILVIO BLACK



STONE GREY



SILVIO WHITE

PRICE LIST

Ibiza - £184 + VAT

Silvio (Black & White) - £152 + VAT

Stone Grey - £265 + VAT

Copenhagen table - £218 + VAT

Coniston table - £650 + VAT



COPENHAGEN



STONE GREY



CONISTON

COFFEE TABLES



KENJI (CALICO)



KENJI (BLACK)



BARBICAN



EDEN FLUTED

PRICE LIST

Eden Fluted - £197 + VAT

Kenji (Black or Calico) - £350 + VAT

Barbican* - £160 + VAT

Chevron* - £220 + VAT

* Matching items are available.



CHEVRON



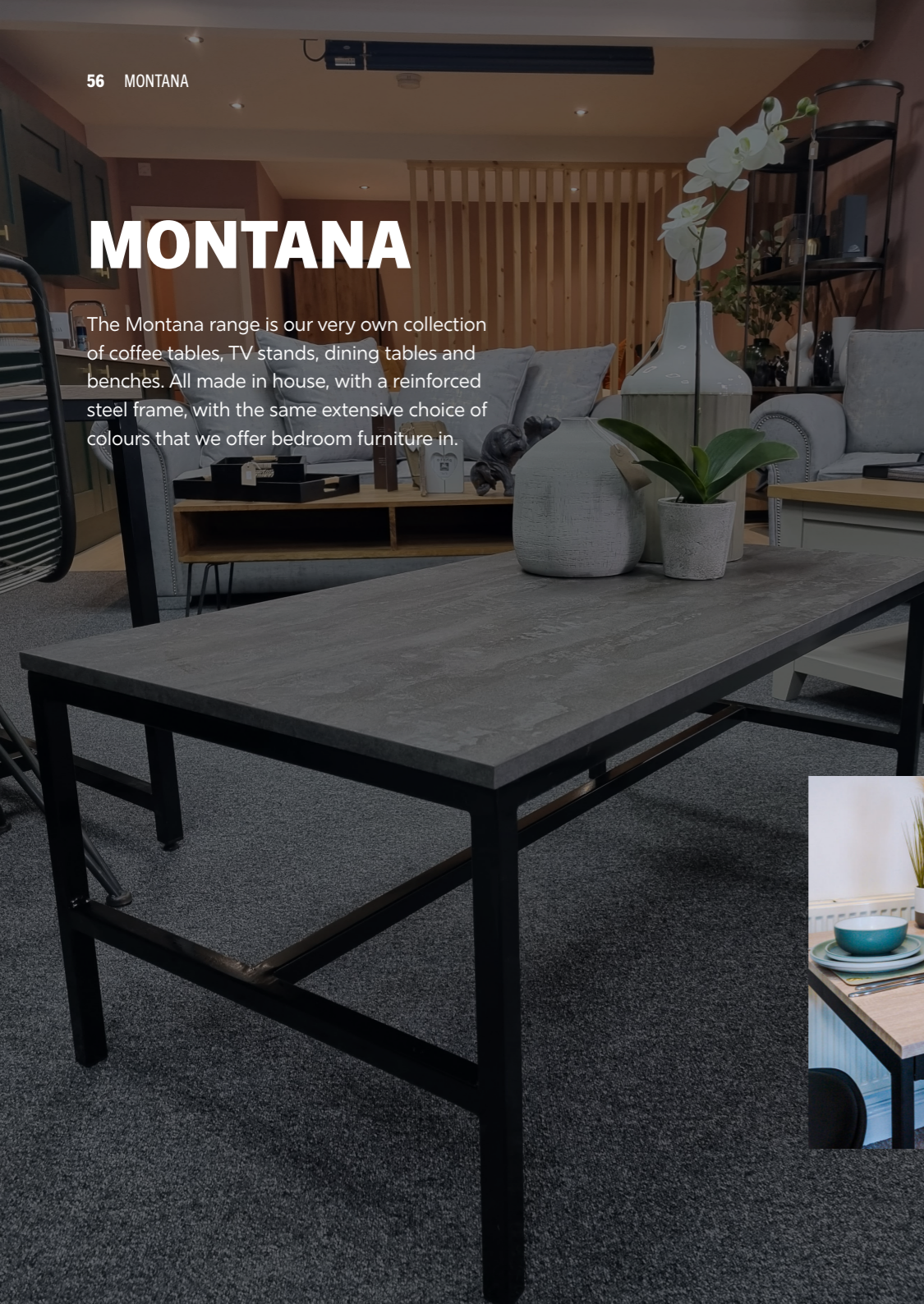
KENJI CALICO



EDEN

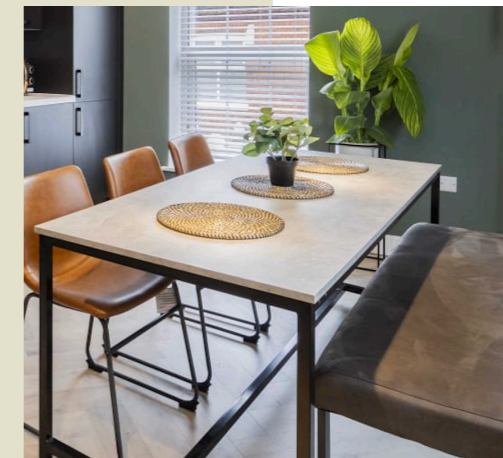
MONTANA

The Montana range is our very own collection of coffee tables, TV stands, dining tables and benches. All made in house, with a reinforced steel frame, with the same extensive choice of colours that we offer bedroom furniture in.



PRICE LIST

- 4ft Dining table - £234 + VAT
- 4ft Bench seat - £192 + VAT
- 6ft Dining table - £255 + VAT
- 6ft Bench seat - £199 + VAT
- 8ft Dining table - £276 + VAT
- 8ft Bench seat - £215 + VAT
- Coffee table - £190 + VAT
- TV Cabinet - £215 + VAT



MONTANA TV CABINETS

Our Montana TV cabinets have the dimensions: 1200mm x 450mm x 500mm. Bespoke sizes are also available.



COLONIAL GRANGE OAK

GOLD CRAFT OAK



WHITE CRAFT OAK



PADSTOW

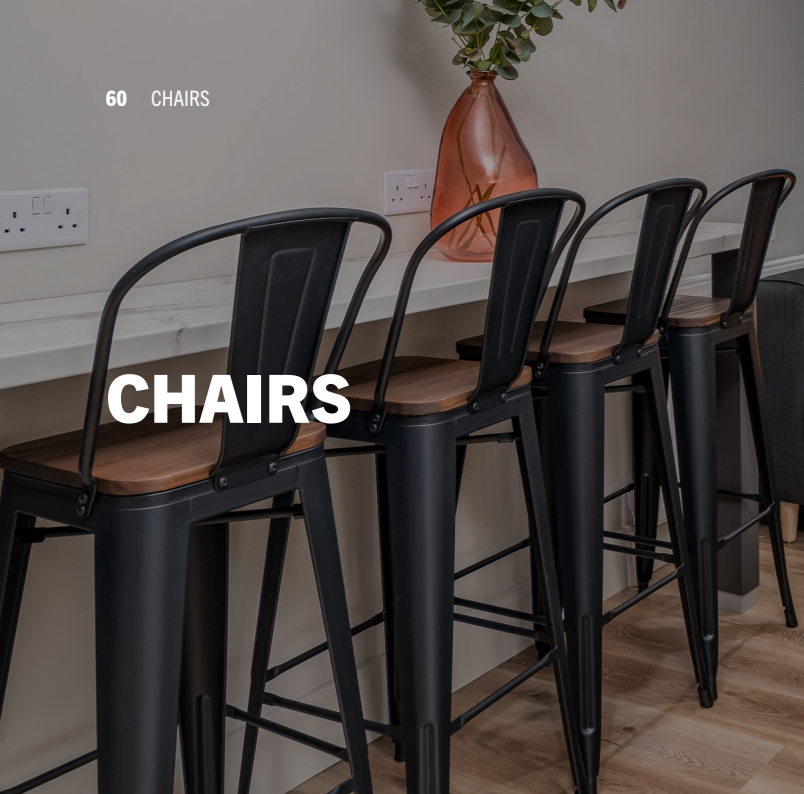


PLATINUM GRANGE OAK



CONCRETE AND IRON FLOW





CHAIRS



GRAFTON
DINING CHAIR
£60 + VAT



GRAFTON
STOOL
£73 + VAT



4359 BLACK
WIRE CHAIR
£60 + VAT



COOPER GREY
FAUX LEATHER CHAIR
£98 + VAT



COOPER TAN
FAUX LEATHER CHAIR
£98 + VAT



LOUVRE CHAIRS,
GREY BLACK AND WHITE
£60 + VAT



NOVA BLACK
CHAIR
£89 + VAT



MANDY OLIVE
VELVET CHAIR
£87 + VAT



ALFA VEGAN
LEATHER DINING CHAIR
£127 + VAT



COOPER VEGAN
LEATHER STOOL
£120 + VAT

ACCENT CHAIRS

Accent chairs add style and comfort to any space, offering versatile designs that complement interiors while creating inviting focal points.



CHARLES RACING GREEN



CHARLES IVORY



CHARLES RACING GREEN



ABEL CREAM



ABEL CHARCOAL

PRICE LIST

Durham (All colours) – £140 + VAT

Charles (Ivory & Racing Green) – £200 + VAT

Abel (Cream & Charcoal) – £230 + VAT



DURHAM OLIVE



DURHAM GREY



DURHAM RUST



EXTRA ITEMS



WARDROBE MIRRORS*
£44 + VAT



BEDDING AND TOWELS
PRICE ON REQUEST

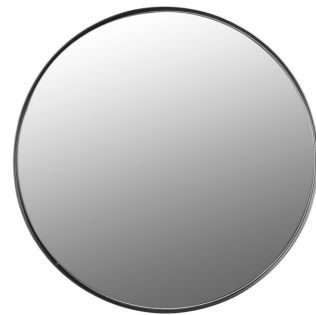
*Please note wardrobe mirrors can only be fitted to the outside of the wardrobe available in two different sizes for standard wardrobes and combinations.



**GREY DISTRESSED
STONE LAMP**
£35 + VAT



**LONG MIRROR
WITH GOLD FRAME**
100cm x 40cm £65 + VAT



**ROUND MIRROR
WITH BLACK FRAME**
50cm £40 + VAT
80cm £55 + VAT



**ROUND MIRROR
WITH GOLD FRAME**
50cm £40 + VAT



DECORATIVE FAUX PLANTS
STARTING FROM £18 + VAT



Wild INTERIORS

The team behind Landlord Furniture Co also bring you on-trend, luxury home accessories.

A collection of beautifully curated home furnishings that combine top quality with down-to-earth prices, because great style doesn't need to come with a luxury price tag.

 wild-interiors.co.uk



LOOKING FOR INSPIRATION?

We have curated a selection of moodboards using our furniture colours matching to popular wall colours.

Whether you have a colour scheme in mind, it's your first HMO and you need some assistance or you are having complete decision fatigue...we can help you create a beautiful and unique space.



GREEN SMOKE

GREEN SMOKE



GREY SONOMA OAK

GREY SONOMA OAK

DARK ARTWOOD



GREY SONOMA OAK



DARK ARTWOOD

CORNFORTH WHITE



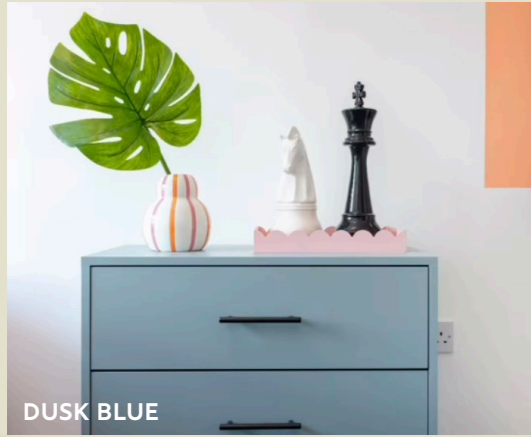
ROCKFORD LIGHT HICKORY AND WHITE



VENICE SAPPHIRE



EMPEROR



DUSK BLUE

DE NIMES



HARTFORD MINK

ASK OUR TEAM FOR HELP TO BRING YOUR IDEA TO LIFE



CONCRETE AND SILK FLOW



MONACO PUMPKIN

DOWN PIPE



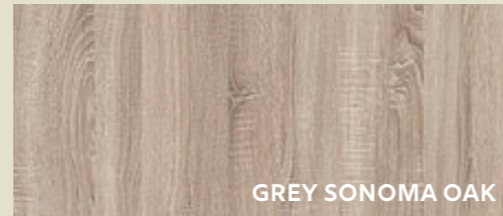
GREY SONOMA OAK WITH DUSK BLUE FASCIA



GREY SONOMA OAK



LIGHT ARTWOOD



GREY SONOMA OAK



WHITE CRAFT OAK



CONCRETE AND CHARCOAL FLOW



JEFFERSON HESSIAN



PLATINUM GRANGE OAK



WHITE CRAFT OAK



SILVER MATIZ

ELEPHANT BREATH

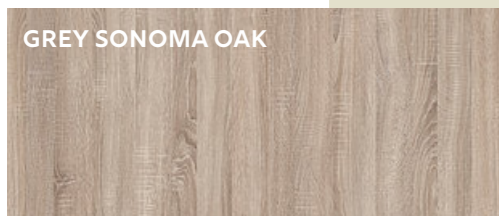
CASHMERE

PLATINUM GRANGE OAK

STIFFKEY BLUE



PLATINUM GRANGE OAK



GREY SONOMA OAK



GREY SONOMA OAK



PACIFIC BOUTIQUE



WHITE CRAFT OAK

WHAT OUR CLIENTS SAY ABOUT US



"A fantastic range that's well designed, great quality and great value; created by a team who really understand this market. Jemma helped us from start to finish and was attentive, patient and thorough, helping our complex order glide through effortlessly."

Kathryn Merrington
Eureka Spaces

"Top quality furniture yet again; looks great and rock solid in terms of build and materials."

Damon Ormonde
DH Ormonde Ltd



"After searching around for some time coming across Landlord Furniture Co solved the complications furnishing a property presents. Heidi part of the sales team being an expert on the furniture range helped enormously choosing furniture for the HMO I am setting up. Welcoming, with the focus on solving problems made buying from the team efficient and uncomplicated. Delivery was swift with excellent communication as to times and dates. The team Jay and Rob were task focused and experts with the furniture range. Professional, friendly and courteous at all times representing the company in absolutely the best possible way. Should I set up a second rental property I will have no hesitation employing the services of Landlord Furniture Co again. It is clear that values the company is founded upon is not just represented but put into practice at every point of contact."

Francis Barber
FSB Homes

"The service from start to finish has been excellent. Heidi was extremely helpful and responded very quickly to both emails and calls. The speed at which the team were able to make and deliver custom furniture is very impressive and I am very impressed with the quality. I will definitely be using Landlord Furniture Co again!"

Lizzie Bennet
Cosy Homes Property Management

"I used the Landlord Furniture Co for the first time to furnish a 5 Bed HMO. Heidi was very helpful and provided a great service in store with the design changes I needed to suit the property. The Delivery was quick and the lads who installed were great, all furniture was installed in every room without myself having to deal with any issues or build."

Ben Frost
DPI Property Group Ltd

FAQ'S

How do I order?

Give us a call or drop us an email. Our website is not e-commerce because we offer such a bespoke service. Our sales team will be able to assist with any questions you may have as well as offering you advice on our product ranges.

Now I have ordered how can I pay?

We accept payment via BACS and all major credit cards, including AMEX (as a small business we try to discourage clients from using it due to the fees). We also work with several finance lenders, feel free to ask for more details. We require a 10% deposit the day the order has been confirmed, and the full balance is required 48 hours before delivery, failure to make payment may result in the order being placed on hold.

Do you have a showroom?

Our showroom is located near Oldham and is available to visit or use for your client meetings.

My property is not quite ready, what do I do?

If a refurb is delayed, please let us know within 7 working days so we can reschedule. If the order is delayed less than 7 working days than the original delivery date or our teams get to site and cannot install the furniture you will have to pay a redelivery charge. If your property is almost complete, we can deliver if the paint on the walls is dry, and the carpets are installed.

Access

If you cannot get to site on the day of delivery, clients can leave a key in a lock box and inform the office of the code, who will pass this onto the delivery team. The team will lock up and put the key back when leaving. We can take images of the installation at your request if needed. Please let the sales team know, and they can arrange this for you.

Bespoke items

Any bespoke items are unreturnable. If you wish to return any items from your order this will incur a 35% restocking fee and a collection charge if applicable.

Does the furniture come with a warranty?

Yes our furniture comes with either a 3-year warranty or 1-year warranty on smaller items. Please email the team for a full copy of our warranty policy.

Is installation included?

Yes, installation is included in the price. If you do not wish for the items to be installed we can do so at your own discretion.

Does LFC remove old furniture?

Yes we can dispose of your existing furniture, simply get in touch for more details.

POP IN AND SEE US!

Our showroom is open:
Monday – Thursday 8:30am – 4:30pm
Friday 8:30am – 3:30pm
Saturday by appointment only.

We kindly ask that you call ahead to make an appointment to ensure that there is a member of the sales team available to help.

**We look forward to seeing you soon.
Dale, Lisa and all the team
(and Luna & Ruby too).**

Opening hours

Monday – Thursday
8:30am – 4:30pm
Friday 8:30am – 3:30pm
Saturday by appointment only.

Showroom

Unit 2, Coin Street,
Oldham, OL2 6EE





Call

0161 633 2651

Email

info@landlordfurnitureco.co.uk

 landlordfurnitureco

 landlordfurnitureco

Find us here

Scan the QR code below to find us on Google Maps.



AVAILABLE COLOUR RANGES

All colours can be mixed and matched.

WE ONLY USE 18MM MFC BOARD TO MAKE OUR FURNITURE

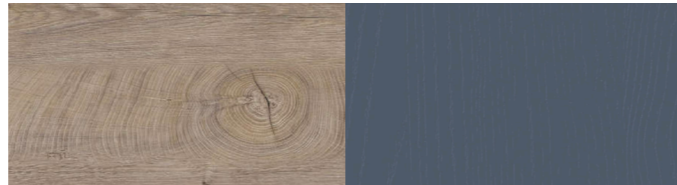
KESWICK



SMOKED KALA ASH

SMOKE GREEN WOODGRAIN

PADSTOW



RAW END GRAIN OAK

ALBY BLUE WOODGRAIN

CREMONA OAK



COAST EVOKE OAK

RAW END GRAIN



CANNOLO CREMONA OAK

COTTA CREMONA OAK



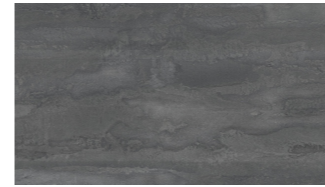
CHARCOAL FLOW



CONCRETE FLOW



SILK FLOW



IRON FLOW



WHITE CRAFT OAK



GREY CRAFT OAK



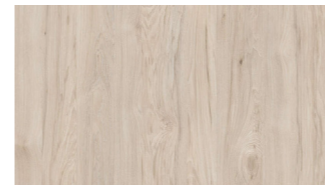
GOLD CRAFT OAK



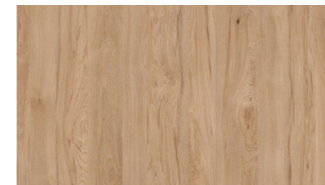
PLATINUM GRANGE OAK



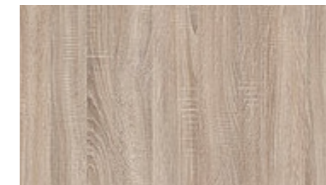
DARK ROCKFORD HICKORY



LIGHT ROCKFORD HICKORY



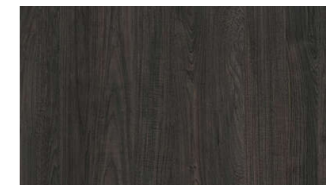
NATURAL ROCKFORD HICKORY



GREY SONOMA OAK

SAMPLES

Colour samples are available, speak to a member of our team for information.



CARBON MARINE WOOD



LANDLORD FURNITURE CO

Opening hours

Mon – Thurs 8:30am – 4:30pm

Friday 8:30am – 3:30pm

Saturday by appointment only.

Showroom

Unit 2, Coin Street,
Oldham, OL2 6EE

Call

0161 633 2651

Email

info@landlordfurnitureco.co.uk



[landlordfurnitureco](https://www.facebook.com/landlordfurnitureco)



[landlordfurnitureco](https://www.instagram.com/landlordfurnitureco)

Find us here

Scan the QR code below to
find us on Google Maps.

